



2020
Annual Report



Message from the Chief

Due to the Covid-19 Pandemic, 2020 was much different than any recent year for the West Manatee Fire and Rescue District. Due to the rapid evolving information over the past year, we made many adjustments to our day-to-day routine. The District was fortunate to have ordered a large supply of Personal Protective Equipment just prior to the national shortage. The safety of both the employees and those we serve continued to be of the utmost priority.

The mission and dedication to this district has not changed. The firefighters have continued showing up every day to ensure that our customers are taken care of. During the month of March and April the administrative office worked remotely. It is a testimony to previous administration to know that the work they put into moving the servers remotely, allowed the administration to continue operating without too many issues.

The Fire Prevention Bureau personnel have continued to achieve exceptional accomplishments with continued improvements in our overall service delivery and the way we respond to our residents and visitors in the West Manatee Fire and Rescue District. This report will afford us the opportunity to highlight all the services we provide from non-emergency to all-hazard emergency services.

As 2021 unfolds, a great deal of change will encompass the District. The District's focus is to retain professional, properly trained and fully equipped personnel capable of providing fire protection, fire suppression, rescue and emergency medical services to those citizens in need. The West Manatee Fire and Rescue District is made up of personnel that are dedicated, passionate professionals who are committed to delivering fire and EMS services with skills that exceed the industry standard. Over the next several years many of the officers will be retiring. It is of great importance that we continue working towards a succession plan so that the years of knowledge from these employees will be passed down to the new regime.

We remain mindful of our responsibility to provide the West Manatee Fire and Rescue District with the best possible service, without exception. While remembering "We cannot lead from the rear if you wish to be recognized within and beyond our community as a fire department of Excellence".

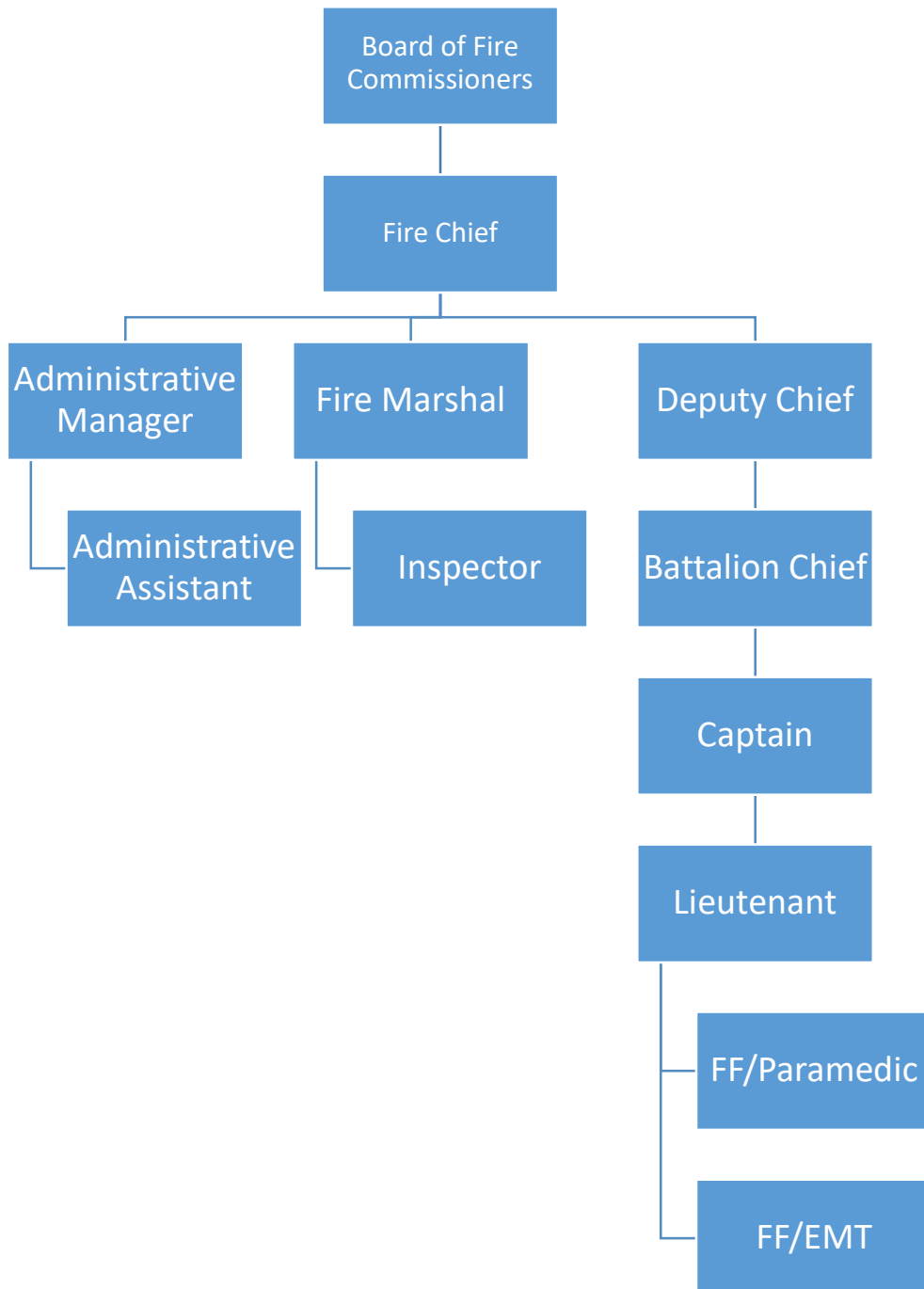
Ben Rigney
Fire Chief

Agency Background	1
District Boundary.....	2
Mission Statement	3
Financial Highlights	4
Operations.....	6
Emergency Medical Services.....	8
Response Times.....	9
Fire Prevention	10
Facilities	12
Apparatus	13
Contact	14

Agency Background

West Manatee Fire & Rescue District is an Independent Special Fire Control District located in western Manatee County, Florida. Within the District are the Cities of Anna Maria, Bradenton Beach and Holmes Beach as well as unincorporated areas of Cortez, Tidy Island, Palma Sola, West and Northwest Bradenton. The resident population of the district is approximately 34,705, with an additional seasonal influx of approximately 13,000 non-residents.

WMFR employs 43 full time personnel, of which 36 are suppression personnel divided equally among three shifts that work a 24/48 shift schedule which amounts to a 56-hour work week. The Fire Chief, Deputy Chief, Fire Marshal, fire inspectors and administrative support personnel are located at the administration building. All non-suppression personnel are assigned to 40-hour workweek schedules.



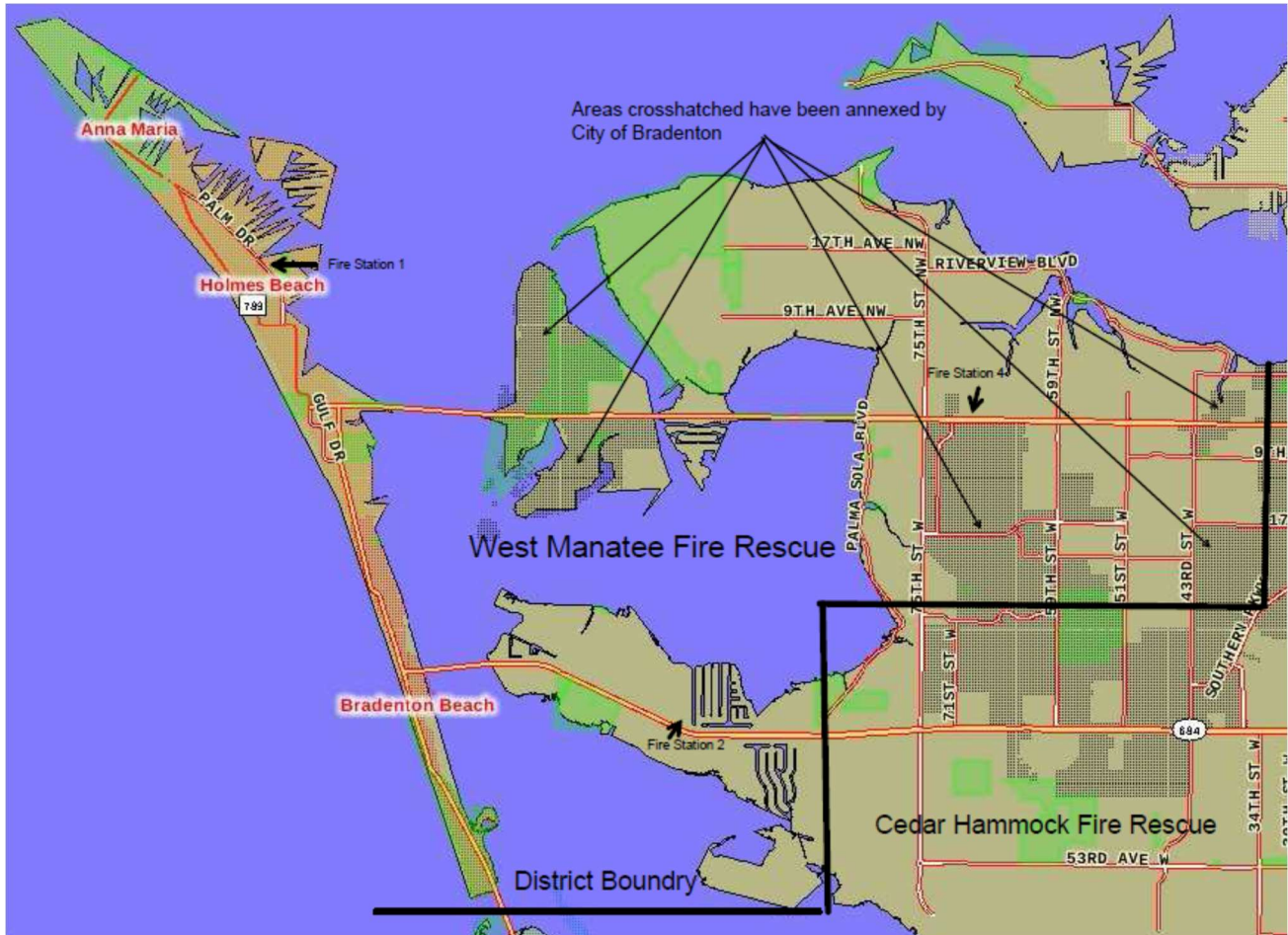
The boundaries of the Fire District are as follows:

Northern Boundary: Manatee River and Tampa Bay.

Eastern Boundary: The area of 32nd Street West along the city limits of Bradenton.

Southern Boundary: A line that borders the City of Bradenton, Cedar Hammock Fire district and the Town of Longboat Key.

Western Boundary: The Gulf of Mexico.



Residential development has accelerated with two new subdivisions in Northwest Bradenton. Also, the Manatee County Board of County Commission approved the development plans for Peninsula Bay, which is a 350 acres tract along Cortez Road, with the addition of these new residential areas as well as the growth in vacation rentals, it is anticipated that the District's call load will increase.

West Manatee Fire Rescue is committed to providing professional services essential to the safety and well-being of the community. This is accomplished through quick and prepared response, life safety education, prevention, and other related services.

OUR VALUES:

In order to exceed the expectations of the community that places their trust in us, we will hold one another accountable for carrying out our mission, living our values, and seeing our vision become reality.

OUR COMMITMENTS:

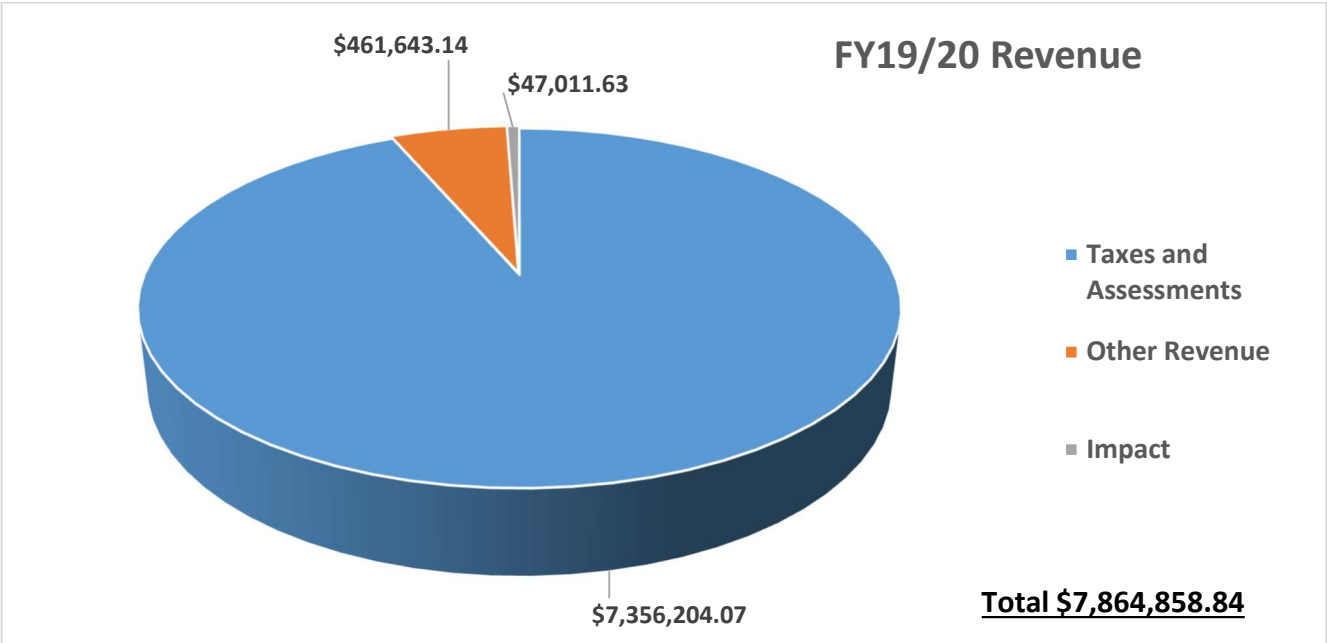
TO OUR RESIDENTS AND THE COMMUNITY:

We are committed to meeting the needs and expectations of our residents today and in the future, to develop innovative solutions to the service delivery challenges we encounter, and to provide rapid response delivered by dedicated and caring professionals.

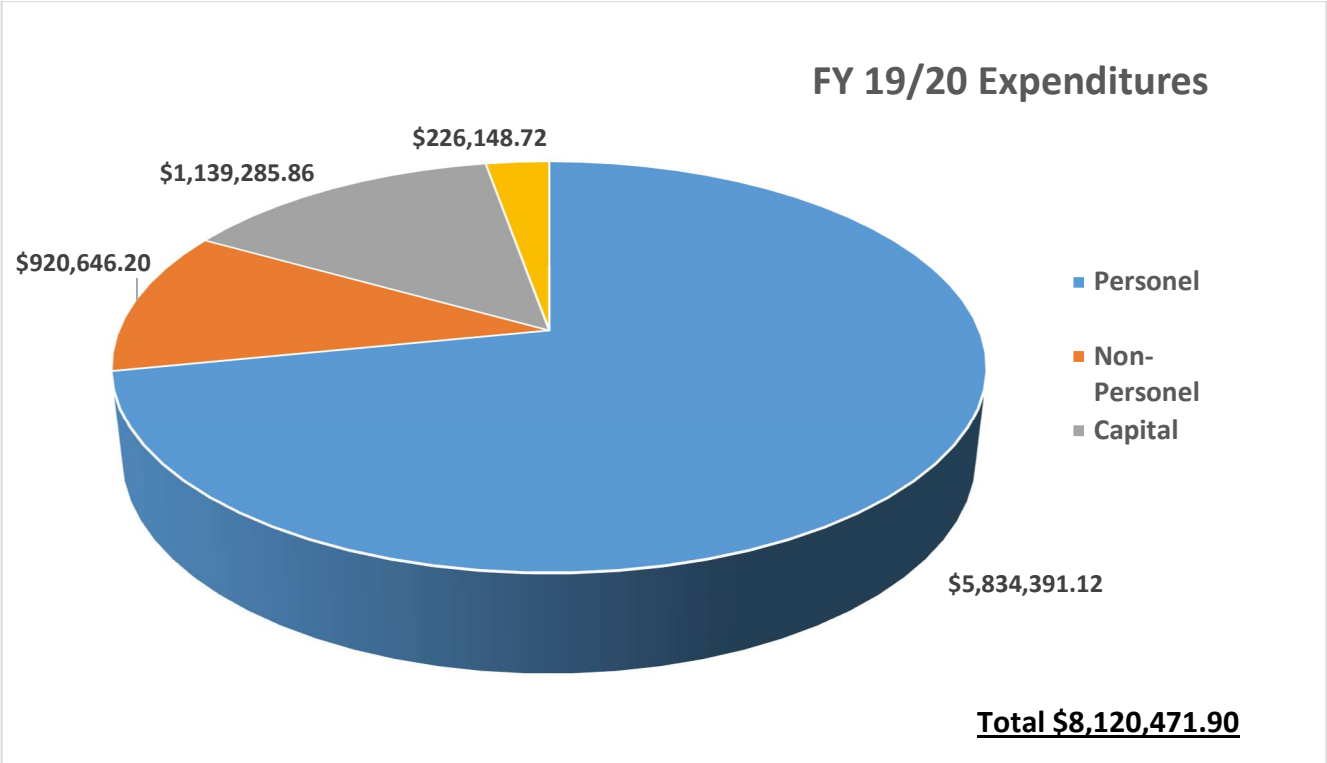
TO OUR EMPLOYEES:

We are committed to providing a working environment characterized by trust and respect, supportive of open and honest communication, and fostering professional growth, community involvement, and illustrating the highest ethical, moral and personal standards to incite public trust.

Revenues



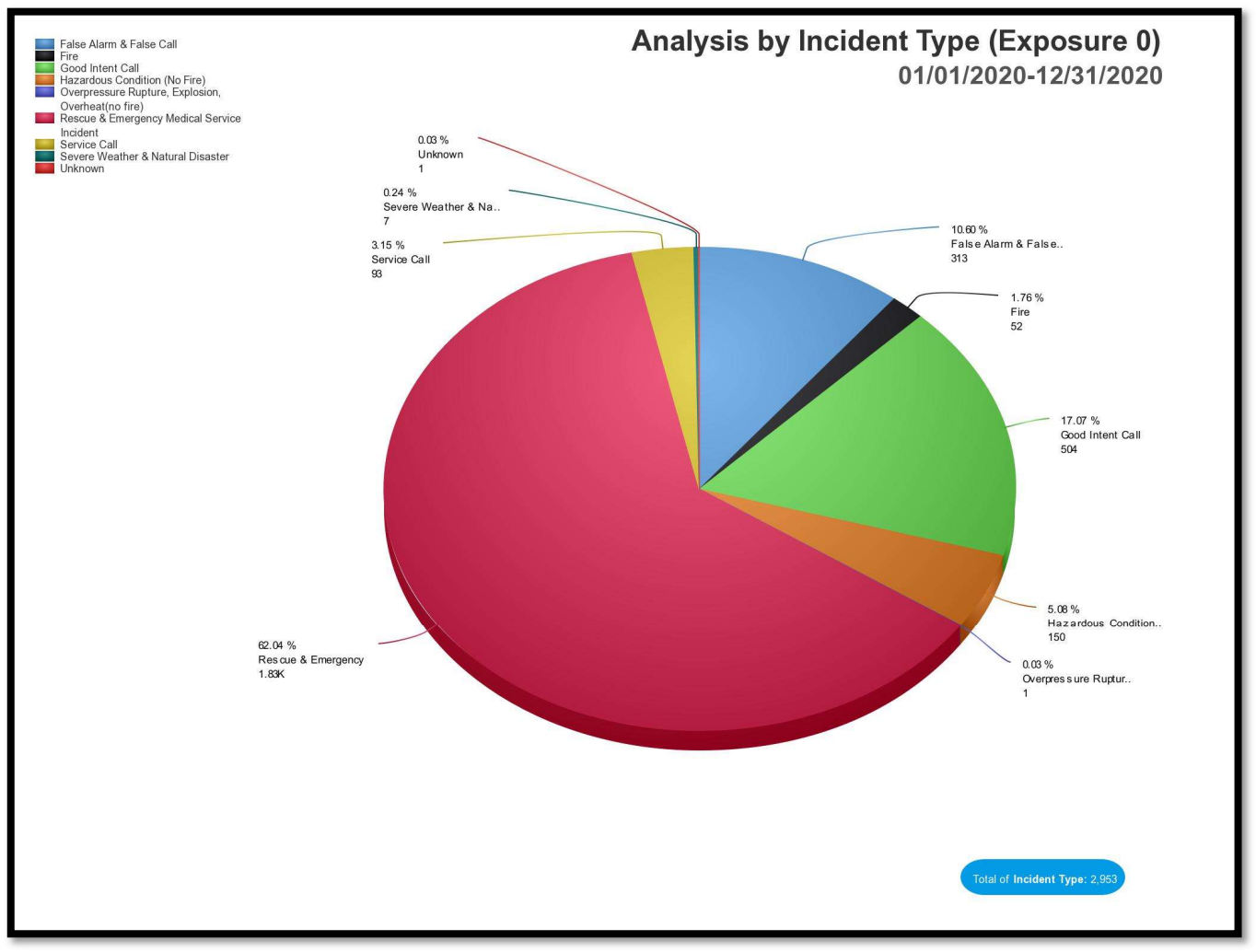
Expenditures



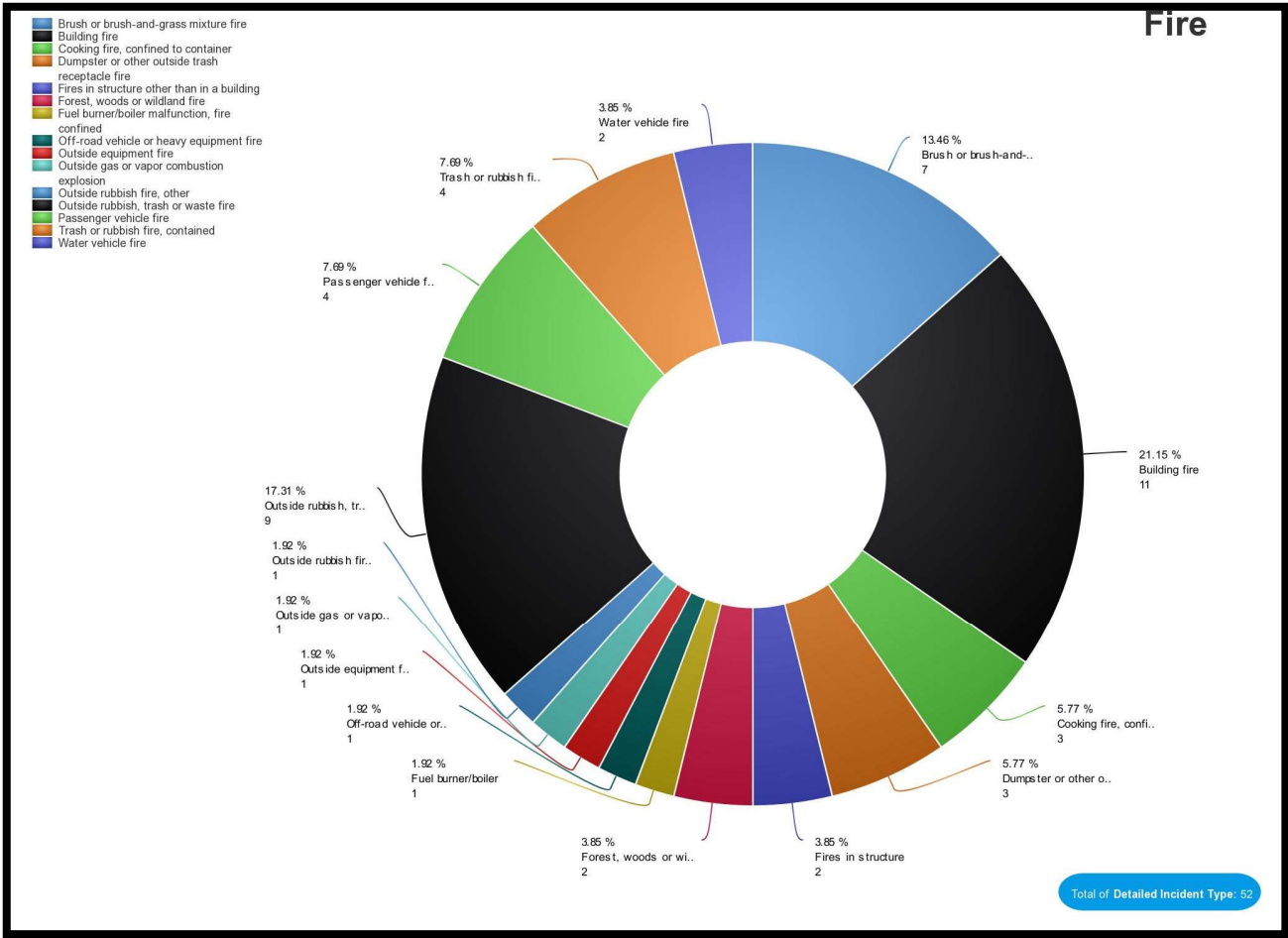
Operations

RESPONSE ACTIVITY

The Operations Division of West Manatee Fire Rescue is responsible to manage the Emergency and Special Operations Divisions. Currently, thirty-six (36) personnel are assigned with 12 on duty per 24-hour operational shift. Personnel are tasked to respond to calls for service which include structure fires, emergency medical services, vehicle accidents, water and beach rescue, hazardous materials spills and releases and marine fire and rescue responses. The operations division responded to 2,953 incidents in 2020. Approximately 68% of those incidents were emergency medical responses.



The District responded to 52 incidents categorized as fire incidents with 11 building fires. The value of property lost was approximately \$358,000 in 2020.



Below is a breakdown of the Medical calls for the past two (2) years. Looking at each quarter you can see a trending volume increase.

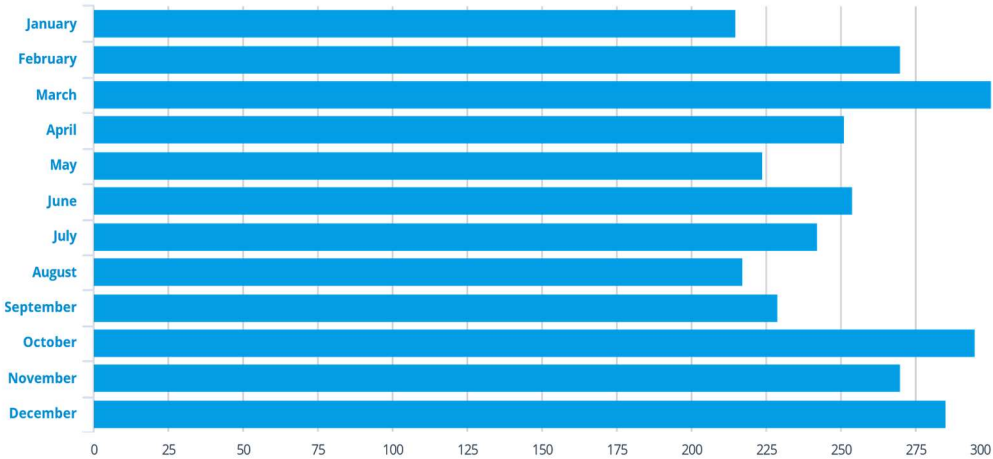
Custom Jan 1, 2019 - Dec 31, 2020

0%
TRANSPORTS
Percentage of Patient Encounters

7%
NON TRANSPORTS
Percentage of Patient Encounters

93%
OTHER DISPOSITIONS
Percentage of Patient Encounters

3,052
RECORDS
In Selected Time Slice



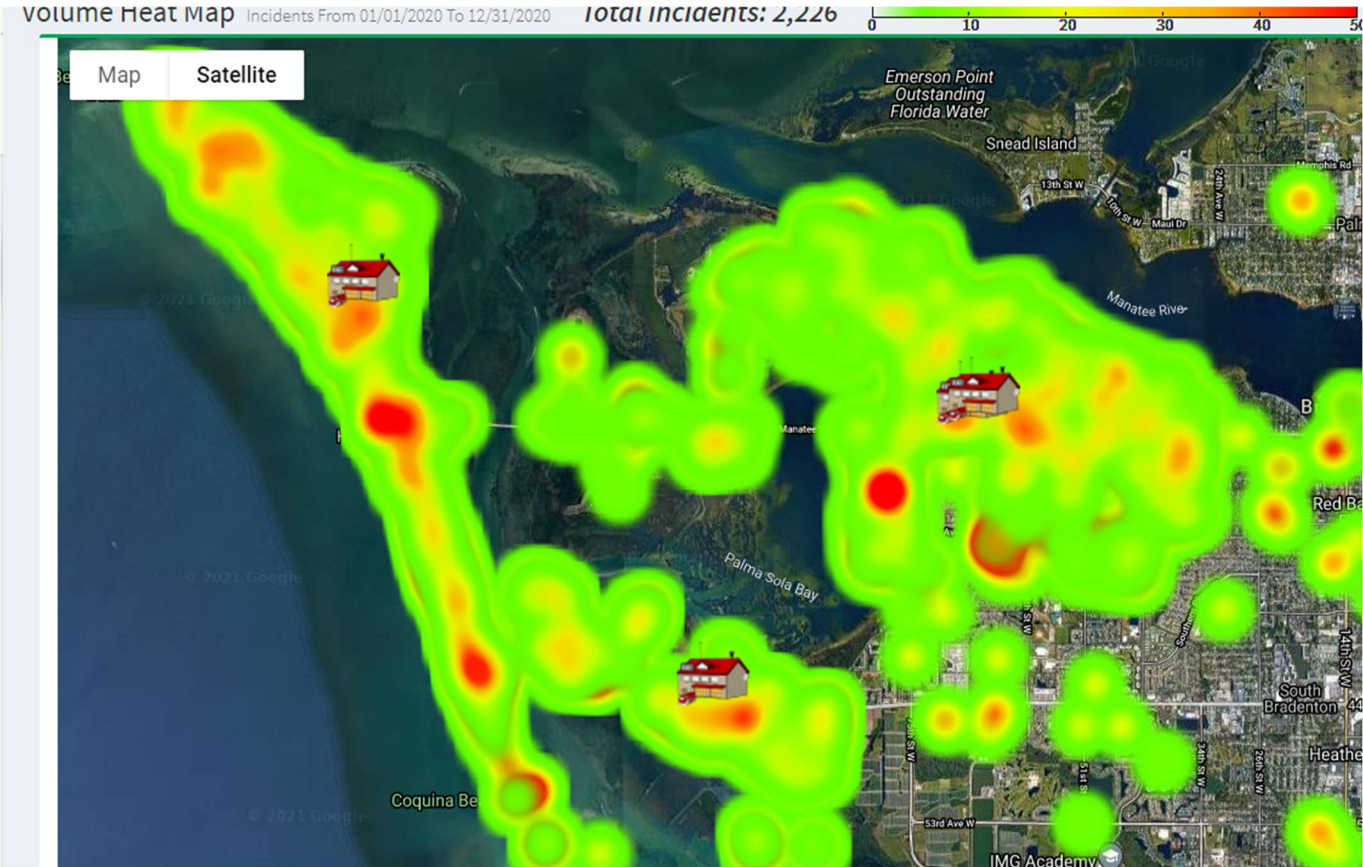
731
DAYS
In Selected Time Slice

Counts % Rows % Columns % All

	Q1 2019	Q2 2019	Q3 2019	Q4 2019	Q1 2020	Q2 2020	Q3 2020	Q4 2020	Q1 2021	Q2 2021	Q3 2021	Q4 2021	Q1 2022	Total
January	63				152									215
February	75				195									270
March	96				204									300
April		90				161								251
May		76				148								224
June		70				184								254
July			69				173							242
August			41				176							217
September			62				167							229
October				122				173						295
November				117				153						270
December				137				148						285
Total	234	236	172	376	551	493	516	474						3,052

EMS Heat Map

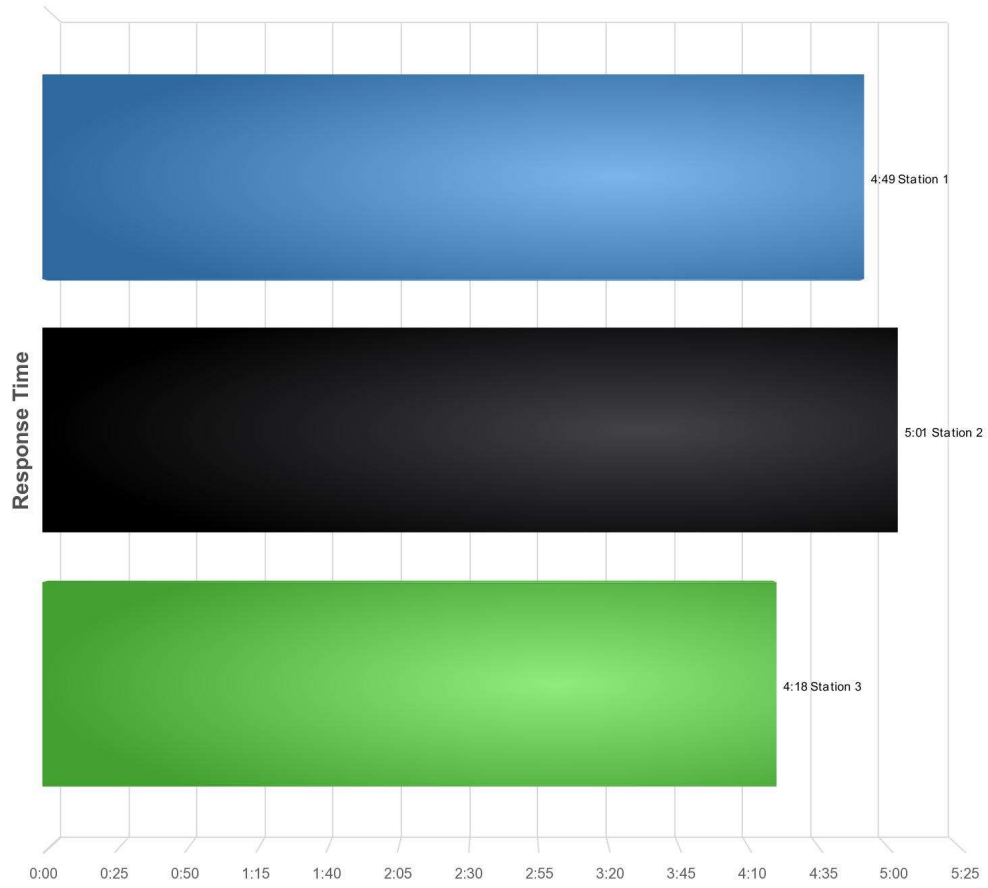
Response personnel responded to 2,034 emergency medical incidents and provided care. The map below depicts the EMS call volume by geographic location for 2020. The dark red areas indicate high call volume in the designated locations.



- Station 1
- Station 2
- Station 3

Average Response Time by Station

01/01/2019-12/31/2019

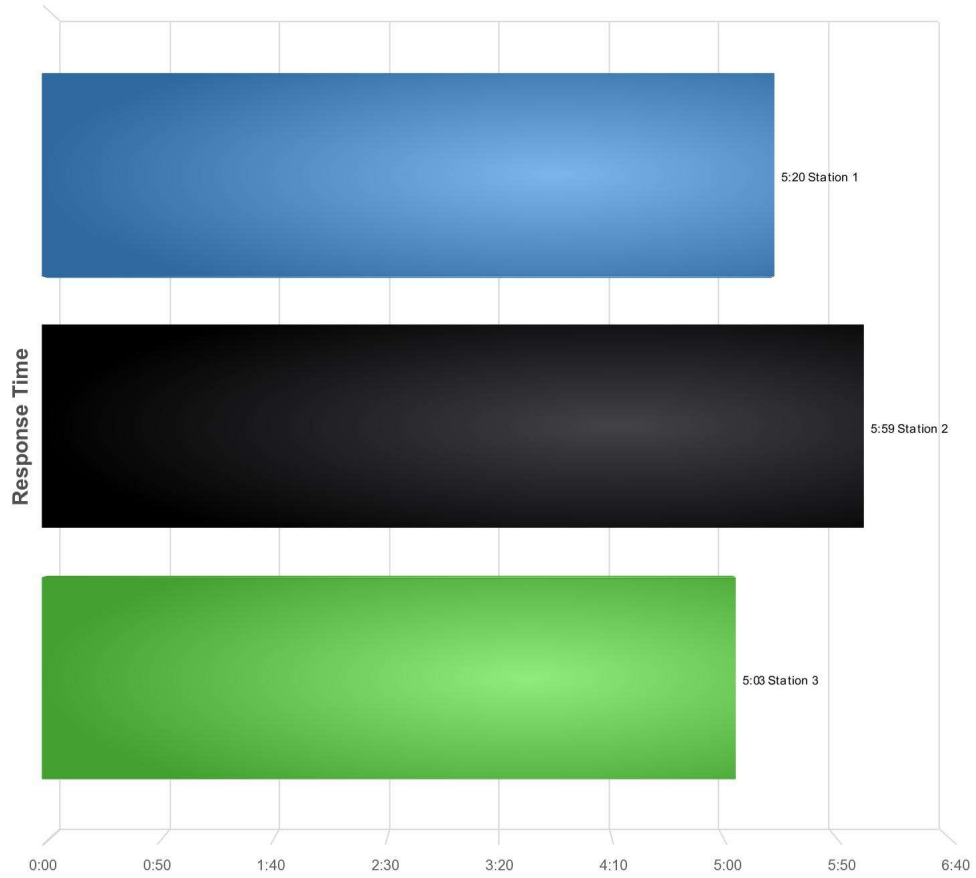


Total of Station: 4:41

- Station 1
- Station 2
- Station 3

Average Response Time by Station

01/01/20-12/31/20



Total of Station: 5:23

Fire Prevention

Engineering

Utilizing the three pillars of fire prevention: Engineering, Education and Enforcement, West Manatee Fire and Rescues Fire and Life Safety Bureau had an extraordinarily productive year in 2020. Despite a ravaging pandemic and reeling economy, new commercial construction and rehabilitation within our district continued. These construction activities brought with them the addition of dozens of new fire and life safety features that were added to both new and rehabilitated occupancies. Noteworthy in this regard was the demolition of a previous hotbed for the production and consumption of illegal drugs which was replaced by a 125,000 square foot multi-story storage occupancy that is fully sprinklered, alarmed, and outfitted with the districts first class "A" bi-directional amplification system. In addition, multiple new sprinkler systems, new standpipe systems, new fire alarm systems, etc. were permitted and installed.

Education

The Bureaus commitment to targeted public education initiatives, although stymied by the pandemic, relied heavily on previously underutilized ways of educating our customer base. Knowing there would be limited to no traditional educational opportunities within our district schools, nor would there be an annual department open house, the bureau focused on campaigns such as "Safe Build." Through our "Safe Build" educational campaign, Bureau staff educated municipality representatives, contractors, and their staff regarding the compliance requirements of NFPA 241, Standard for Safeguarding Construction, Alteration, Demolition Operations.

In addition to educating customers outside of WMFRD, Bureau staff developed curriculum for fire line personnel on topics such as: Occupancy Driven Emergency Action Plans, Outdoor Fires (understanding the differences between open fire, recreational fires, bon fires, etc.), Fire Investigations, Fire Alarm Coding, Fire Watch, etc. Bureau curriculum began successful didactic instruction in early January '21. Lastly, recognizing our own need to continuously be improving, Bureau staff cumulatively took in excess of 400 hours of education through the State Fire College or similar educational agencies.

Inspections

Bureau staff completed 2,057 fire and life safety inspections in 2020. Thousands of fire and life safety hazards, with potentially catastrophic consequences, were mitigated. Concerted efforts between Bureau staff and FireWorks (reporting software) are continuously being made to track and trend operational runs and implement new strategies to eliminate loss of life and property.

2020 was a year of vital base lining for The Bureau. One example of this much needed tactic is seen in the 134 malfunction/nuisance alarms responded to by line staff in 2020. Armed with this knowledge and through the use of a combination of engineering, education and/or enforcement initiatives, the Bureau envisions a much more palatable number in 2021. Again, without establishing a baseline it's very difficult to know if we are regressing or progressing.

Conclusion

WMFR's Fire and Life Safety Bureau is committed to preventing fire and reducing risks to life safety for those living and visiting within our district. To that end, we are staunch in our philosophy for making use of the three pillars of prevention: Engineering, Education and Enforcement. Consistently utilizing these pillars will allow us to work hand in hand with the registered design professionals during their design of the structures and systems we all live, work, and recreate in. It will guide us in educating our community of the risks associated with fire and other threats as they emerge. Finally, through consistent enforcement our community will be best positioned to live and flourish within West Manatee Fire Rescue District.

Station 1
407 67th Street West
Bradenton, FL 34209



Fire Station # 1 was opened in the fall of 2016. The facility was engineered to withstand hurricane force winds. This facility will serve as our operations center during major storm events.

Station 2
10350 Cortez Road West
Bradenton, FL 34210



Fire Station # 2 was re-modeled in 2014. The re-model included a complete tear down and rebuild of the living quarters to current building and wind code.

Station 3
6001 Marina Drive
Holmes Beach, FL 34217



Fire Station # 3 was originally constructed in 1983. In 2012 the interior spaces were re-modeled to accommodate additional personnel.

Administration Building
6510 3rd Avenue West
Bradenton, FL 34209



The previous Administration Building was sold in April of 2019. These administrative offices are now temporarily located on the second floor while the district continues to work on building a new Administrative Headquarters.

Emergency Response Apparatus

2020 Pierce Enforcer, E111



2016 Pierce Enforcer Aerial, L129



2014 Pierce Impel, E131



2017 Rescue 138



2019 Command Vehicle, B-1



2016 Fire Boat 136



Contact Information

Administrative Headquarters

PO Box 14028

Bradenton, FL 34280

941-761-1555

Admin@wmfr.org

